

# HEAVY-DUTY ACTUATORS

Burr Engineering's Compac Series of actuators have a proven history to reliability and dependability in a wide range of applications that include: construction equipment, off-road and agricultural products, seat mechanisms, air flow control equipment to name just a few.

Three gear ratios combined with quality acme screws provide a wide range of speeds and capacities.

## Features:

- 12, 24, 36, Volt, DC
- 110, 220, Volt, AC
- Stroke Lengths to 48"
- Die Cast Aluminum Power Heads
- Torque Limiter or Limit Switch End of Stroke Operation
- Zinc Plated Inner and Outer Tubes
- 5000 lbs. Static Load Compac 1000
- 1000 lbs. Static Load Compac 300
- 17:1, 25:1, and 55:1 Gear Ratios

## Handles Loads up to 1000 Pounds

# 31000



ALL FIGURES BASED USING 16263 MOTOR EXCEPT 25:1 RATIO SEE NOTE.\*\*

## SPEED VS LOAD COMPAC 300\* AND 1000

LOAD	17 to 1 Ratio	**25 to 1 Ratio	55 to 1 Ratio
1000 lbs.	NA	NA	.250
750 lbs.	NA	.4375	.270
500 lbs.	NA	.444	.291
300 lbs.	.875	.490	.305
100 lbs.	1.000	.500	.325
0 lbs.	1.111	.555	.343

Note: COMPAC 300 Actuators rated to 300 lb. capacity only  
FIGURES ARE INCHES PER SECOND

\*\* CURRENTLY AVAILABLE IN 12 VOLT DC ONLY  
(P/N 27487 MOTOR, 5000 NO LOAD RPM)

## AMPERAGE DRAW (SHOWN AT 12 VOLTS, DC)

LOAD	17 to 1 Ratio	25 to 1 Ratio	55 to 1 Ratio
1000 lbs.	NA	NA	16
500 lbs.	NA	18	10
300 lbs.	18	12	8
100 lbs.	10	8	6
0 lbs.	3.5	3.5	3.5

FIGURES ARE IN AMPS

## MOTOR LENGTH COMPAC 300 AND 1000

Motor P/N	Voltage	Motor Diameter	Dimension "X"	R.P.M. No Load
16263	12 VDC	2.5"	5.75"	6800
17414	12 VDC	3"	6.5"	5800
23959	24 VDC	2.5"	5.75"	3800
21117	24 VDC	3"	6.5"	6000
14090	36 VDC	2.5"	5.75"	6800
25567	110 VDC	3.38"	6.5"	3400
25566	220 VDC	3.38"	6.5"	3400
26161	12 VDC	3"	6.5"	5000

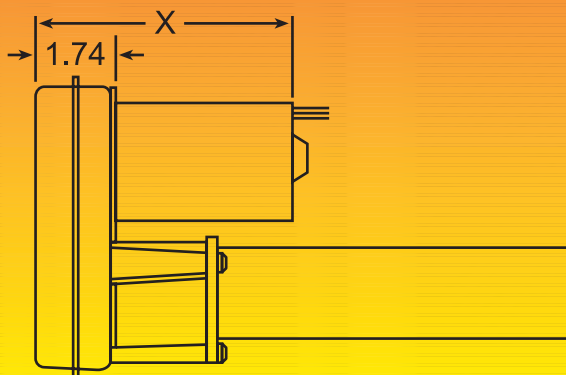
Note: To compute dimension for Limit Switch design heads add 2" to measurement in "Dimension X" column above.

## OPTION LIST

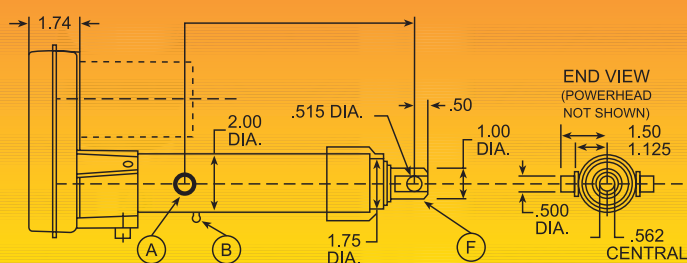
P/N	17950	Trunions (set of 2)
P/N	16426	Grease Fitting
P/N	15611	Weather Seal (Outer Tube to Inner Tube)
P/N	18746	Weather Seal (Head to Tube Seal)
P/N	14701	Rod End, Self-Aligning
P/N	72-400-04	Water-Tight Connector
Motors	(see chart for available motors)	

Note: Digital and analog feedback available with COMPAC 300 and COMPAC 1000 Limit Switch models.

## (MOTOR) LENGTH DETAIL



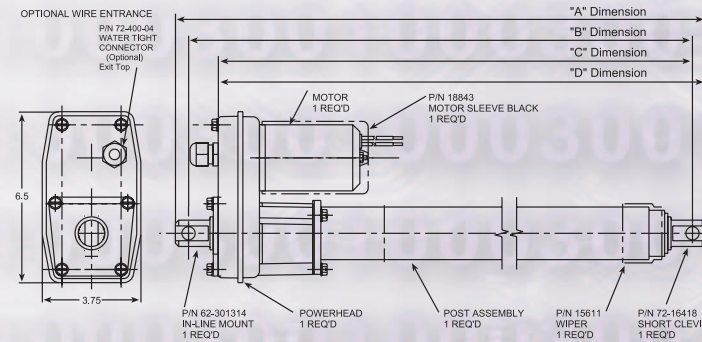
## TRIUNION AND GREASE FITTING DETAIL



P/N 17950 (A) AND P/N 16426 (B) POSITIONED BY CUSTOMER

## COMPAC 1000 SPECIFICATIONS (TORQUE LIMITER DESIGN)

Part #	Gear Ratio	Stroke	Retracted "A"	Retracted "B"	Retracted "C"	Retracted "D"
27782	17:1	4	13.000	12.000	10.870	11.370
27783	25:1	4	13.000	12.000	10.870	11.370
27784	55:1	4	13.000	12.000	10.870	11.370
27785	17:1	6	15.000	14.000	12.870	13.370
27786	25:1	6	15.000	14.000	12.870	13.370
27787	55:1	6	15.000	14.000	12.870	13.370
27788	17:1	8	17.000	16.000	14.870	15.370
27789	25:1	8	17.000	16.000	14.870	15.370
27790	55:1	8	17.000	16.000	14.870	15.370
27791	17:1	12	21.000	20.000	18.870	19.370
27792	25:1	12	21.000	20.000	18.870	19.370
27793	55:1	12	21.000	20.000	18.870	19.370
27794	17:1	18	27.000	26.000	24.870	25.370
27795	25:1	18	27.000	26.000	24.870	25.370
27796	55:1	18	27.000	26.000	24.870	25.370
27797	17:1	24	33.000	32.000	30.870	31.370
27798	25:1	24	33.000	32.000	30.870	31.370
27799	55:1	24	33.000	32.000	30.870	31.370



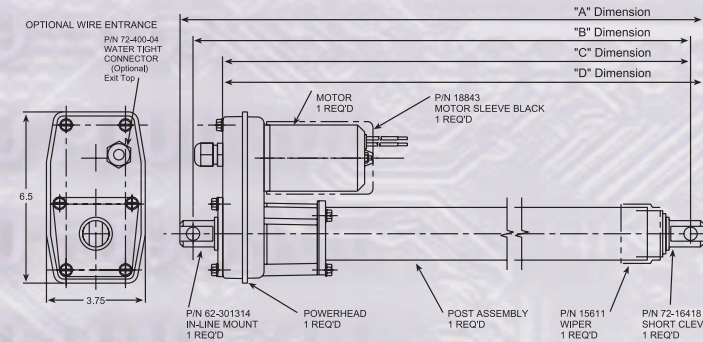
### SPECIFICATIONS

- STROKE\*: 4", 6", 8", 12", 18", 24"
- LOAD: 1000 LBS. MAX.
- GEAR REDUCTION: 17:1, 25:1, 55:1
- MOTOR: SEE CHART ON BACK PAGE
- SCREW: 3/4-6 ACME
- SPEED AND AMPERAGE: SEE CHART ON BACK PAGE
- TUBE SPECIFICATIONS:  
OUTER TUBE: 2" DIA. X .109" WALL  
INNER TUBE: 1-3/4" DIA. X .134" WALL
- PROTECTION: TORQUE LIMITER, SETTING: 170-190 IN. LBS.

\* CUSTOM STROKES AVAILABLE

## COMPAC 300 SPECIFICATIONS (TORQUE LIMITER DESIGN)

Part #	Gear Ratio	Stroke	Retracted "A"	Retracted "B"	Retracted "C"	Retracted "D"
29519	17:1	4	11.625	10.625	9.495	9.995
27800	25:1	4	11.625	10.625	9.495	9.995
29520	55:1	4	11.625	10.625	9.495	9.995
29521	17:1	6	13.625	12.625	11.495	11.995
27801	25:1	6	13.625	12.625	11.495	11.995
29522	55:1	6	13.625	12.625	11.495	11.995
29523	17:1	8	15.625	14.625	13.495	13.995
27802	25:1	8	15.625	14.625	13.495	13.995
29524	55:1	8	15.625	14.625	13.495	13.995
29525	17:1	12	19.625	18.625	17.495	17.995
27803	25:1	12	19.625	18.625	17.495	17.995
29526	55:1	12	19.625	18.625	17.495	17.995
29527	17:1	18	25.624	24.625	23.495	23.995
27804	25:1	18	25.624	24.625	23.495	23.995
29528	55:1	18	25.624	24.625	23.495	23.995
29529	17:1	24	31.625	30.625	29.495	29.995
27805	25:1	24	31.625	30.625	29.495	29.995
29530	55:1	24	31.625	30.625	29.495	29.995



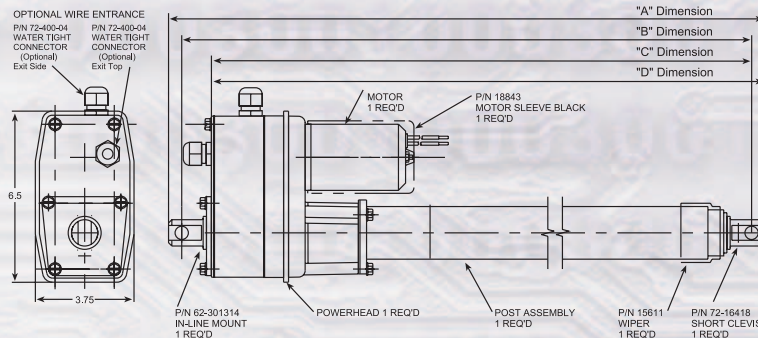
### SPECIFICATIONS

- STROKE\*: 4", 6", 8", 12", 18", 24"
- LOAD: 300 LBS. MAX.
- GEAR REDUCTION: 17:1, 25:1, 55:1
- MOTOR: SEE CHART ON BACK PAGE
- SCREW: 3/4-6 ACME
- SPEED AND AMPERAGE: SEE CHART ON BACK PAGE
- TUBE SPECIFICATIONS:  
OUTER TUBE: 2" DIA. X .109" WALL  
INNER TUBE: 1-3/4" DIA. X .134" WALL
- PROTECTION: TORQUE LIMITER, SETTING: 130-150 IN. LBS.

\* CUSTOM STROKES AVAILABLE

## COMPAC 1000 SPECIFICATIONS (LIMIT SWITCH DESIGN)

Part #	Gear Ratio	Stroke	Retracted "A"	Retracted "B"	Retracted "C"	Retracted "D"
27744	17:1	4	16.625	15.625	14.495	14.995
27745	25:1	4	16.625	15.625	14.495	14.995
27746	55:1	4	16.625	15.625	14.495	14.995
27747	17:1	6	18.625	17.625	16.495	16.995
27748	25:1	6	18.625	17.625	16.495	16.995
27749	55:1	6	18.625	17.625	16.495	16.995
27750	17:1	8	20.625	19.625	18.495	18.995
27751	25:1	8	20.625	19.625	18.495	18.995
27752	55:1	8	20.625	19.625	18.495	18.995
27753	17:1	12	24.625	23.625	22.495	22.995
27754	25:1	12	24.625	23.625	22.495	22.995
27755	55:1	12	24.625	23.625	22.495	22.995
27756	17:1	18	30.625	29.625	28.495	28.995
27757	25:1	18	30.625	29.625	28.495	28.995
27758	55:1	18	30.625	29.625	28.495	28.995
27759	17:1	24	36.625	35.625	34.495	34.995
27760	25:1	24	36.625	35.625	34.495	34.995
27761	55:1	24	36.625	35.625	34.495	34.995



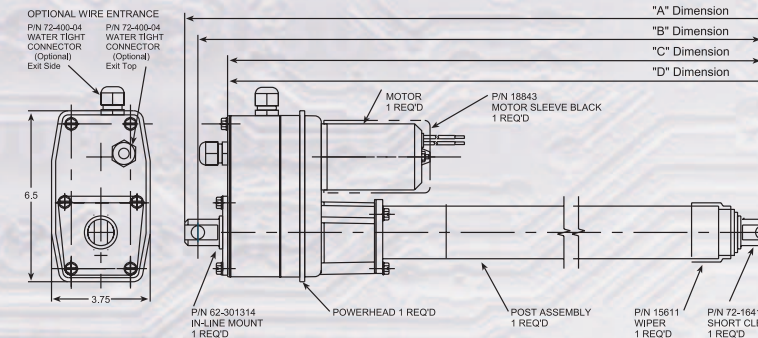
### SPECIFICATIONS

- STROKE\*: 4", 6", 8", 12", 18", 24"
- LOAD: 1000 LBS. MAX.
- GEAR REDUCTION: 17:1, 25:1, 55:1
- MOTOR: SEE CHART ON BACK PAGE
- SCREW: 3/4-6 ACME
- SPEED AND AMPERAGE: SEE CHART ON BACK PAGE
- TUBE SPECIFICATIONS:  
OUTER TUBE: 2" DIA. X .109" WALL  
INNER TUBE: 1-3/4" DIA. X .134" WALL
- PROTECTION: TORQUE LIMITER, (OPTIONAL) SETTING: 170-190 IN. LBS.

\* CUSTOM STROKES AVAILABLE

## COMPAC 300 SPECIFICATIONS (LIMIT SWITCH DESIGN)

Part #	Gear Ratio	Stroke	Retracted "A"	Retracted "B"	Retracted "C"	Retracted "D"
27762	17:1	4	15.313	14.313	13.183	13.683
27763	25:1	4	15.313	14.313	13.183	13.683
27764	55:1	4	15.313	14.313	13.183	13.683
27765	17:1	6	17.313	16.313	15.183	15.683
27766	25:1	6	17.313	16.313	15.183	15.683
27767	55:1	6	17.313	16.313	15.183	15.683
27768	17:1	8	19.313	18.313	17.183	17.683
27769	25:1	8	19.313	18.313	17.183	17.683
27770	55:1	8	19.313	18.313	17.183	17.683
27771	17:1	12	23.313	22.313	21.183	21.683
27772	25:1	12	23.313	22.313	21.183	21.683
27773	55:1	12	23.313	22.313	21.183	21.683
27774	17:1	18	29.313	28.313	27.183	27.683
27775	25:1	18	29.313	28.313	27.183	27.683
27776	55:1	18	29.313	28.313	27.183	27.683
27777	17:1	24	35.313	34.313	33.183	33.683
27778	25:1	24	35.313	34.313	33.183	33.683
27779	55:1	24	35.313	34.313	33.183	33.683



### SPECIFICATIONS

- STROKE\*: 4", 6", 8", 12", 18", 24"
- LOAD: 300 LBS. MAX.
- GEAR REDUCTION: 17:1, 25:1, 55:1
- MOTOR: SEE CHART ON BACK PAGE
- SCREW: 3/4-6 ACME
- SPEED AND AMPERAGE: SEE CHART ON BACK PAGE
- TUBE SPECIFICATIONS:  
OUTER TUBE: 2" DIA. X .109" WALL  
INNER TUBE: 1-3/4" DIA. X .134" WALL
- PROTECTION: TORQUE LIMITER, (OPTIONAL) SETTING: 130-150 IN. LBS.

\* CUSTOM STROKES AVAILABLE

# 3000



ENGINEERED, BUILT, AND SERVICED BY AMERICAN WORKERS IN THE U.S.A.

# BURR

Burr Engineering & Development Corporation  
730 East Michigan Avenue, P.O. Box 460  
Battle Creek, Michigan 49016 USA  
269-966-3122 / fax 269-965-2389  
www.burractuators.com